

A dark, moody photograph of ocean waves, likely at dusk or dawn, with a white text overlay. The water is dark and textured, with white foam visible in the lower half. The text is centered and reads "WAIMĒA 250".

# WAIMĒA 250

EM BREVE

Um pré lançamento da



**DS2**  
EMPREENDIMENTOS

Praia das Toninhas  
Ubatuba - SP





A **Praia das Toninhas** é a irmã da Praia Grande. As duas têm características muito semelhantes, entretanto a Praia das Toninhas é bem **mais tranquila** que a vizinha, e isso já é motivo para que muitos frequentadores prefiram ir para lá.



A região da Praia das Toninhas agrada a quem busca uma **localização central** e não abre mão de **acesso fácil** a serviços, restaurantes e lojas.





Praia Grande



Mirante das Toninhas



Praia das Toninhas

5 minutos da praia



Mercado e Padaria



O mar da Praia das Toninhas tem **trechos tranquilos** (principalmente o lado direito), mas também locais propícios para a **prática de surfe** (especialmente o canto esquerdo).

Praia das Toninhas  
Ubatuba | SP



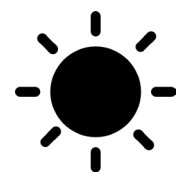


# Prévia da Fachada





# Implantação



Sol da Tarde



Serra do Mar

**1 suíte + 1 banheiro**  
**61,90m<sup>2</sup>**  
Apts 15, 25,  
35 e 45

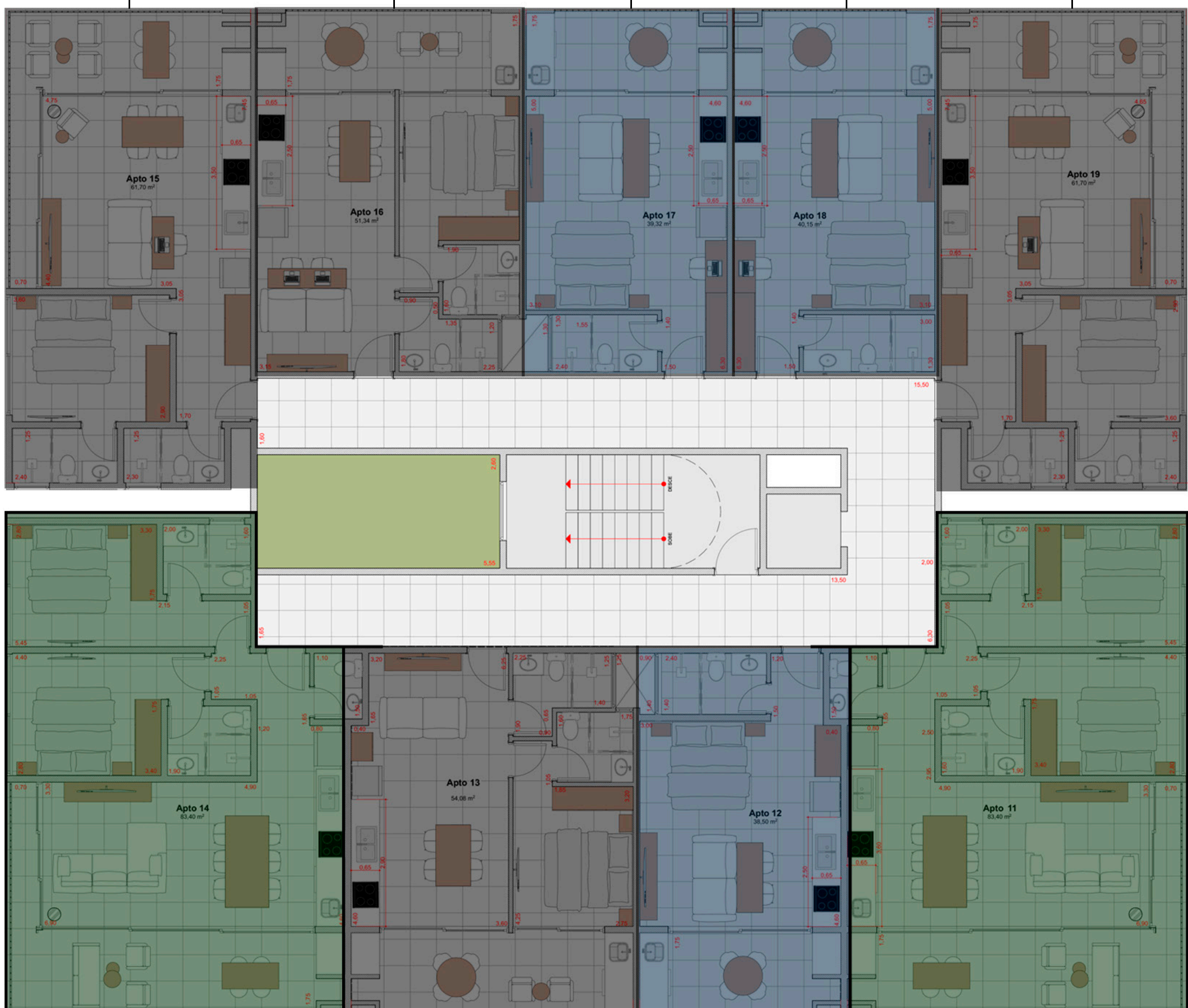
**1 suíte + 1 banheiro**  
**51,70m<sup>2</sup>**  
Apts 16, 26,  
36 e 46

**Studio**  
**39,90m<sup>2</sup>**  
Apts 17, 27,  
37 e 47

**Studio**  
**39,90m<sup>2</sup>**  
Apts 18, 28,  
38 e 48

**1 suíte + 1 banheiro**  
**61,90m<sup>2</sup>**  
Apts 19, 29,  
39 e 49

Rua das Américas



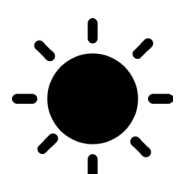
Rua Chile

**2 suítes + lavabo**  
**82,25m<sup>2</sup>**  
Apts 14, 24, 34, 44 e 54

**1 suíte + 1 banheiro**  
**53,50m<sup>2</sup>**  
Apts 13, 23, 33,  
43 e 53

**Studio**  
**38,00m<sup>2</sup>**  
Apts 12, 22, 32,  
42 e 52

**2 suítes + lavabo**  
**82,25m<sup>2</sup>**  
Apts 11, 21, 31, 41 e 51



Sol da Manhã



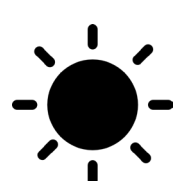
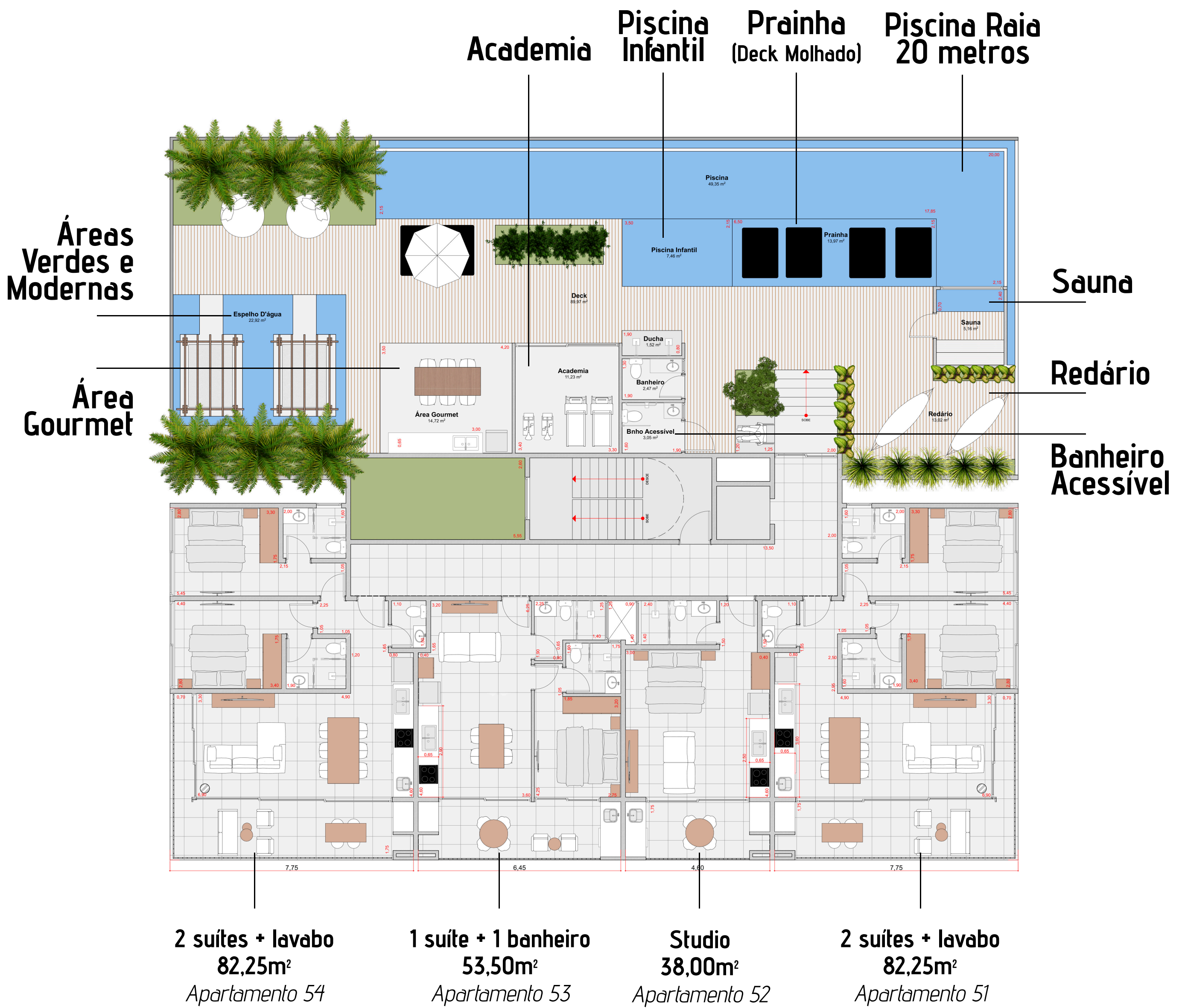
Praia das Toninhas



# Cobertura Área de Lazer



Serra do Mar



Sol da Manhã



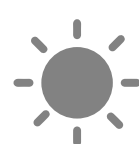
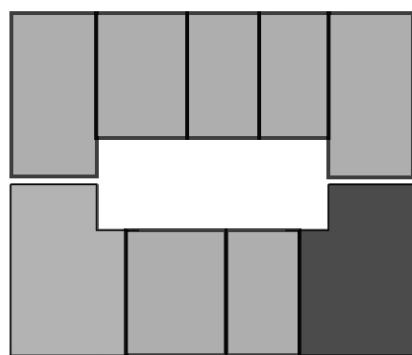
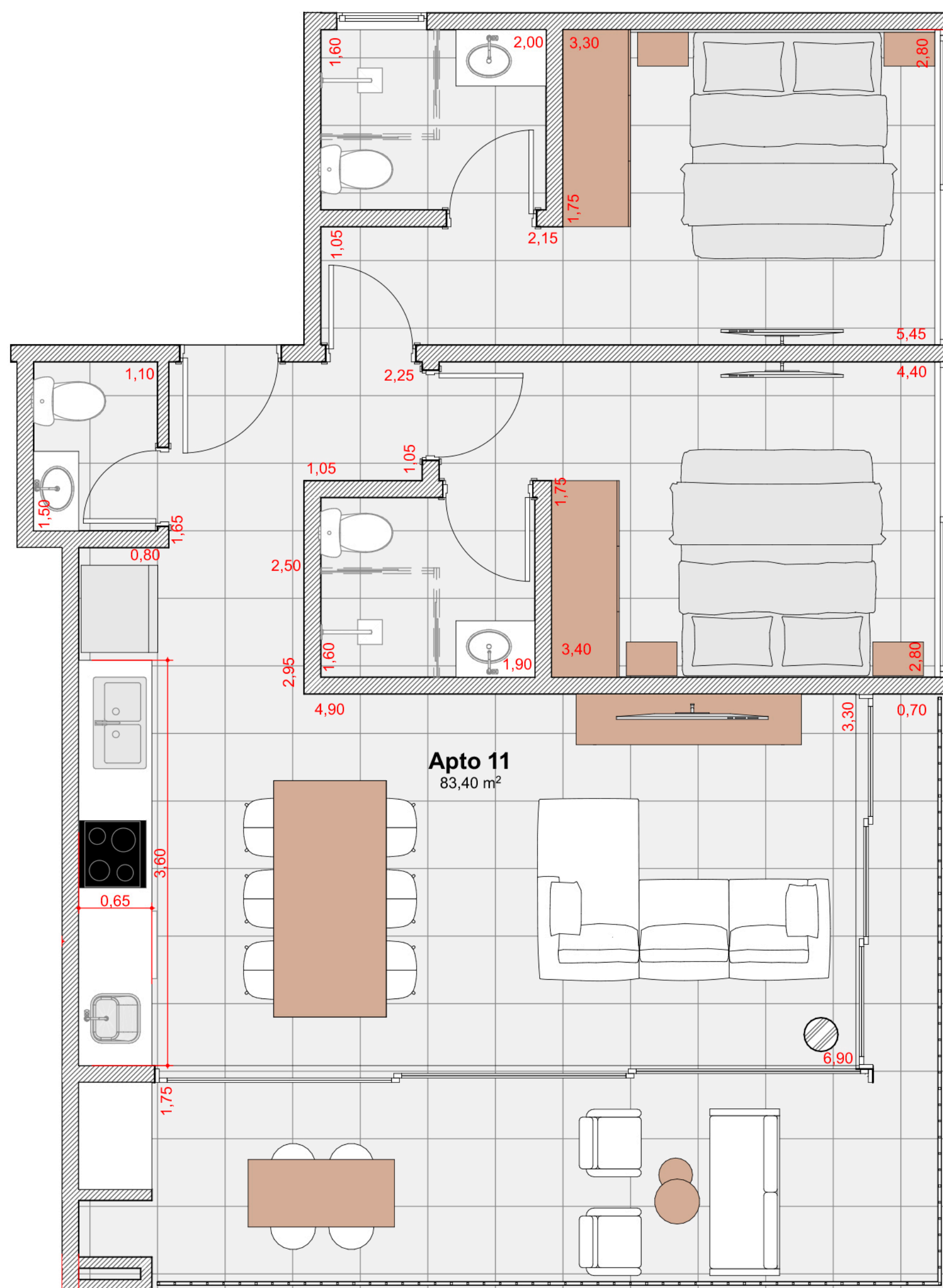
Praia das Toninhas



# 82,25m<sup>2</sup>

## 2 suítes + lavabo

Apartamentos 11, 21, 31, 41 e 51



Sol da Manhã



Praia das Toninhas

  2 vagas de garagem



Bancada de mármore integrada



Sol da Manhã



Varanda gourmet



Armário Náutico



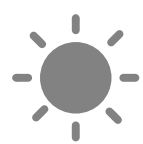
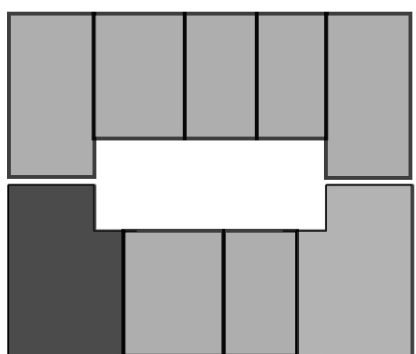
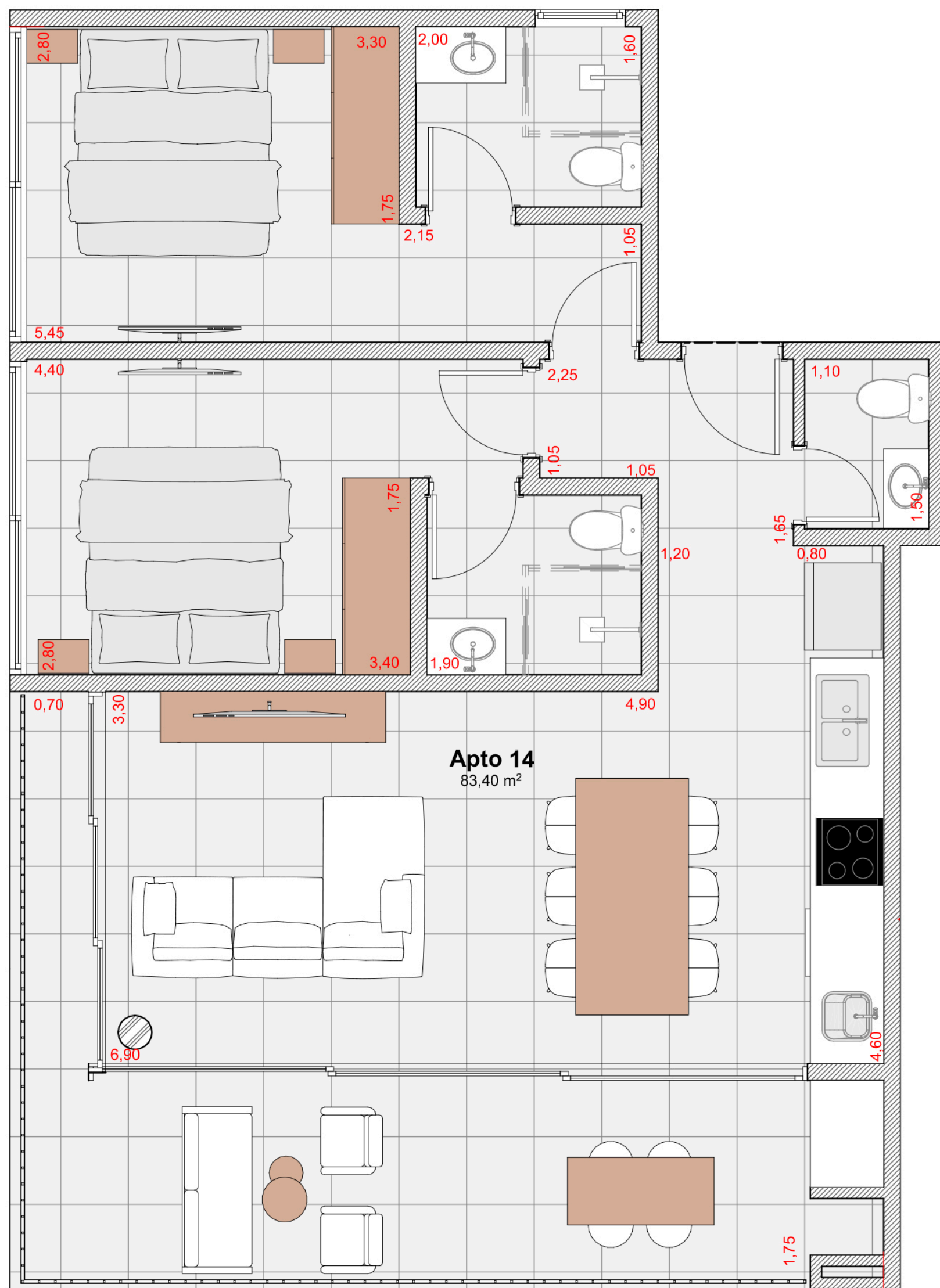
Churrasqueira a carvão



82,25m<sup>2</sup>

2 suítes + lavabo

Apartamentos 14, 24, 34, 44 e 54



Sol da Manhã



Praia das Toninhas



2 vagas de garagem



Bancada de mármore integrada



Sol da Manhã



Varanda gourmet



Armário Náutico



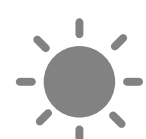
Churrasqueira a carvão



# 61,90m<sup>2</sup>

## 1 suíte + 1 banheiro

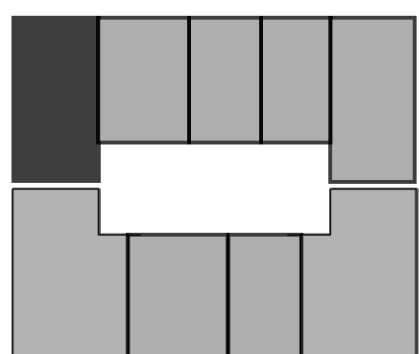
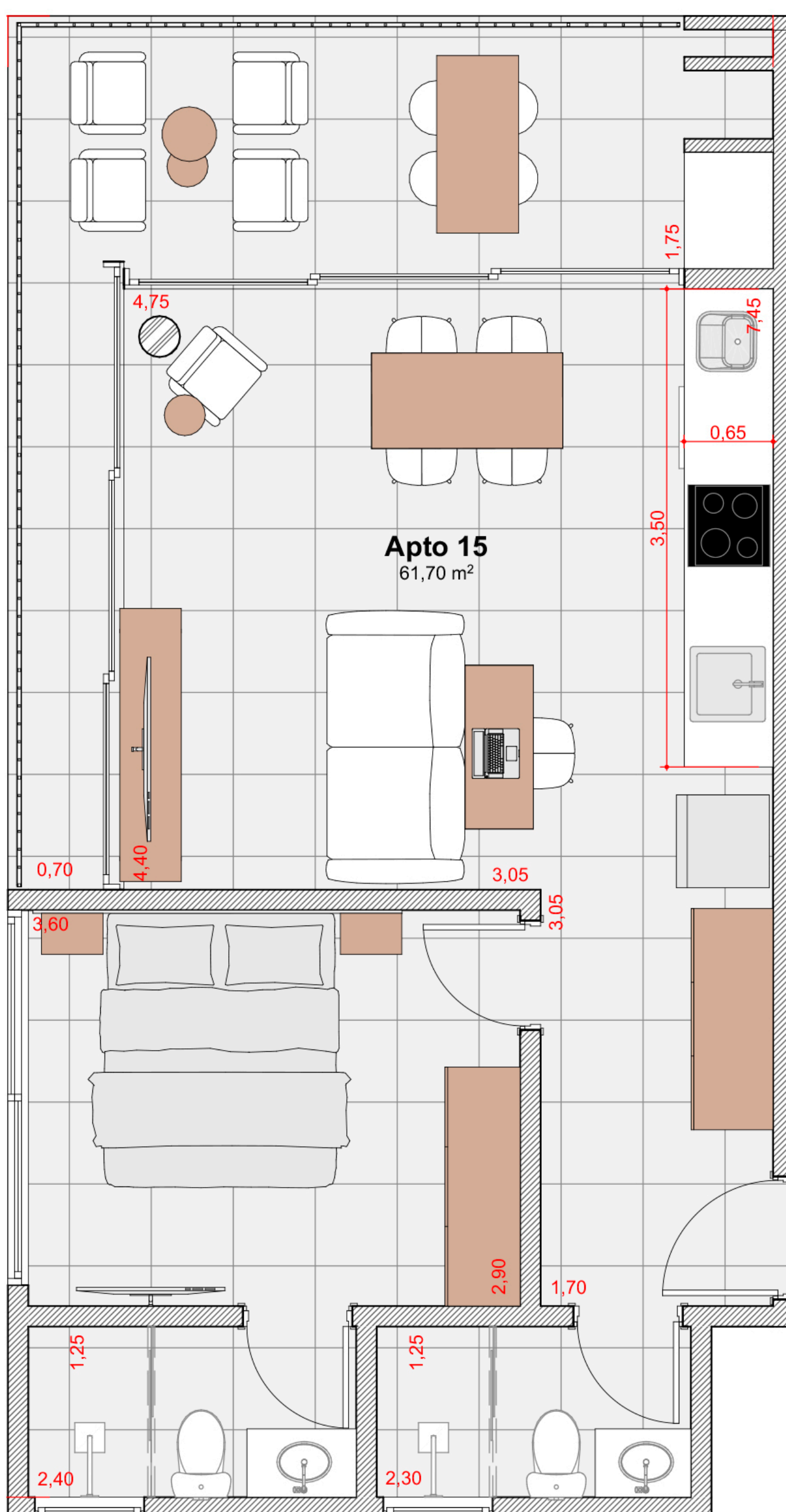
### Apartamentos 15, 25, 35 e 45



Sol da Tarde



Serra do Mar



 1 vaga de garagem

 Sol da Tarde

 Armário Náutico



Bancada de mármore integrada



Varanda gourmet



Churrasqueira a carvão



61,90m<sup>2</sup>

1 suíte + 1 banheiro

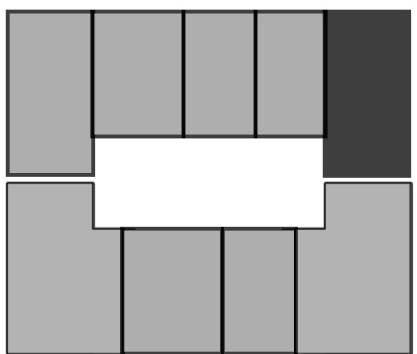
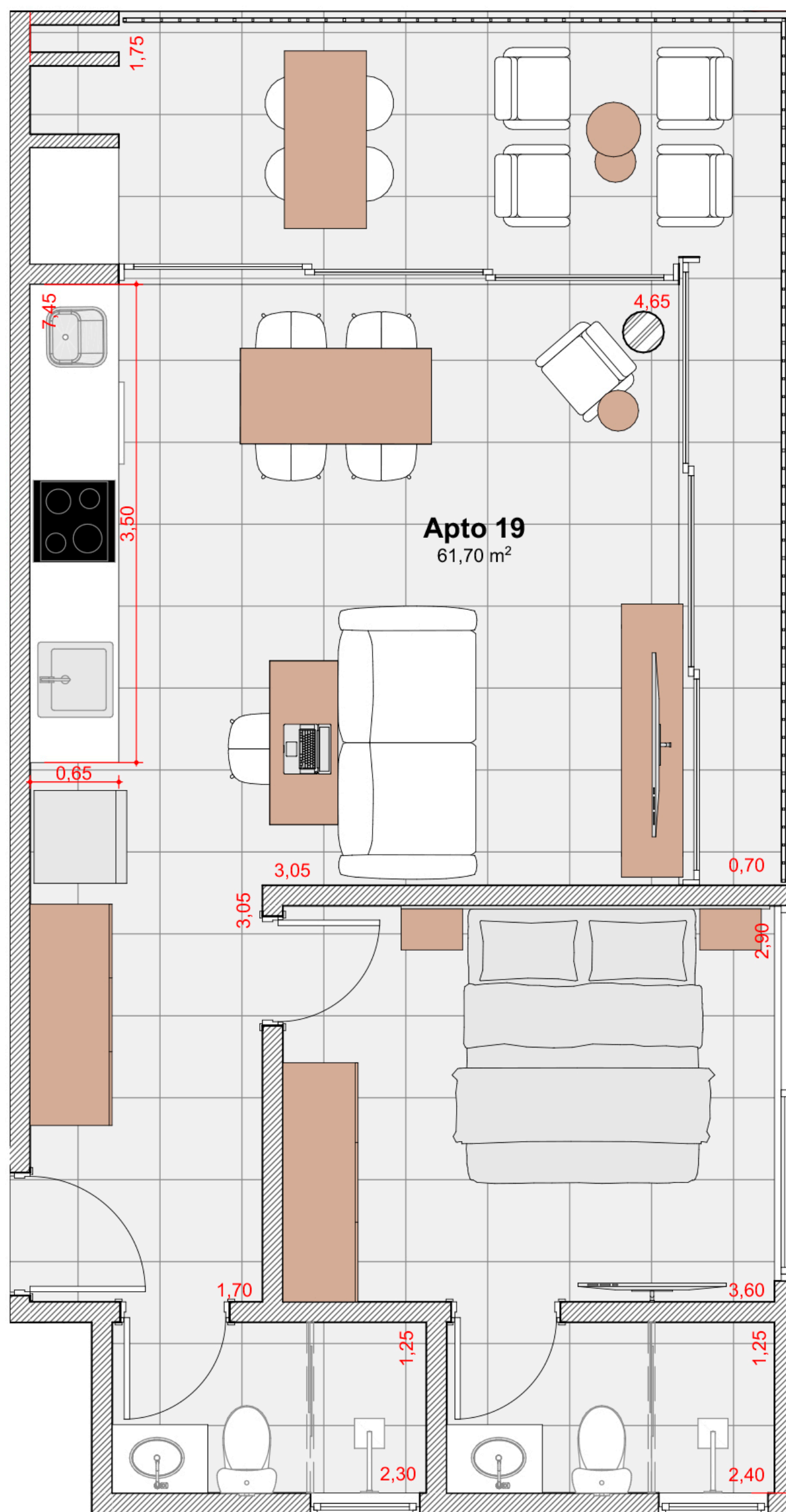
Apartamentos 19, 29, 39 e 49



Sol da Tarde



Serra do Mar



 1 vaga de garagem



Bancada de mármore integrada



Sol da Tarde



Varanda gourmet



Armário Náutico



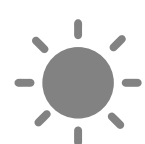
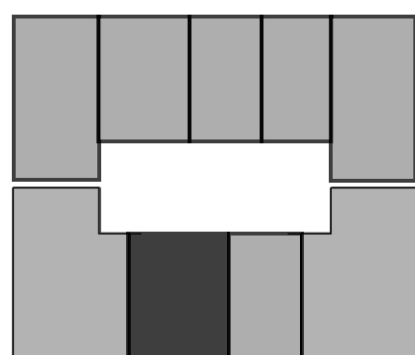
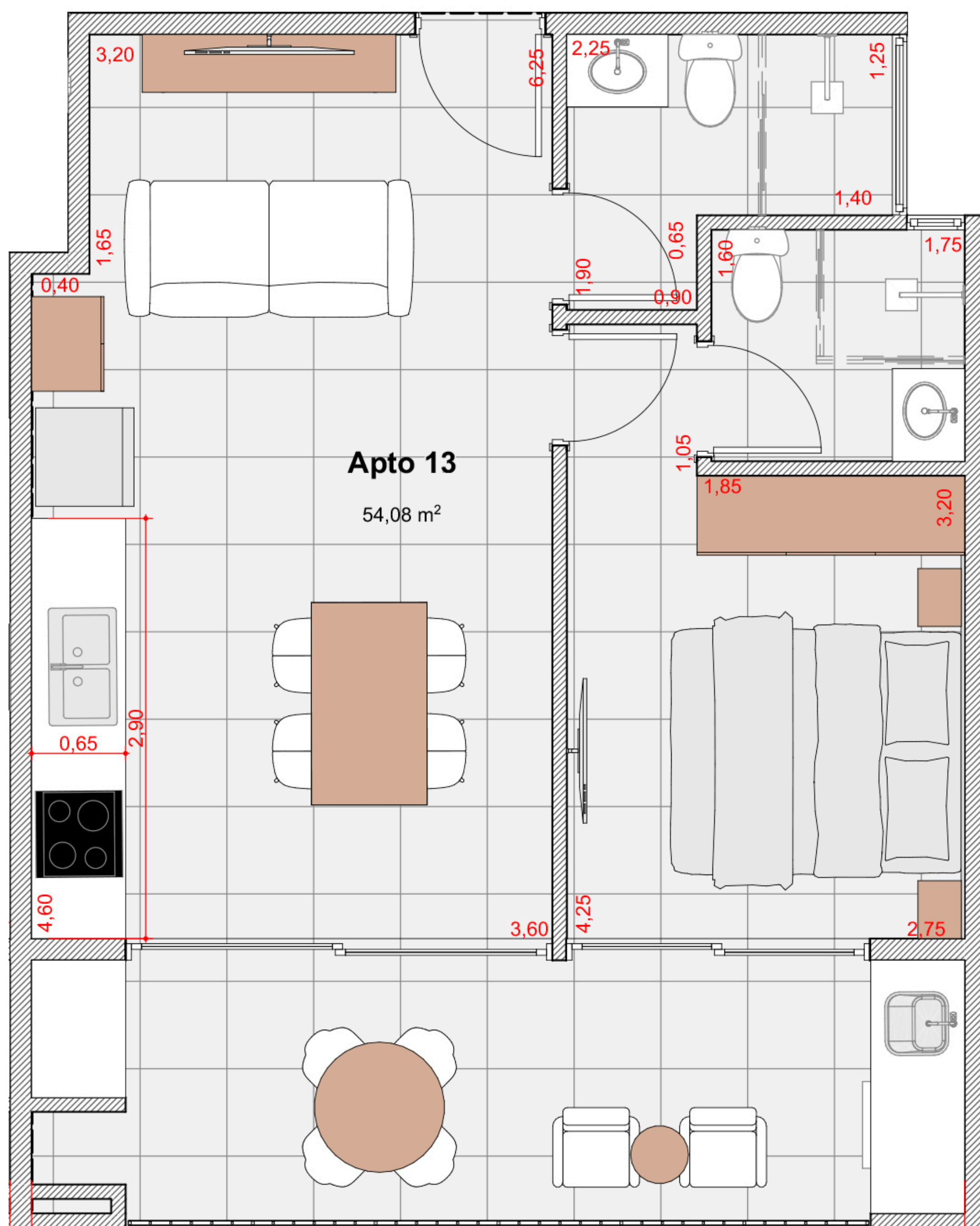
Churrasqueira a carvão



# 53,50m<sup>2</sup>

## 1 suíte + 1 banheiro

Apartamentos 13, 23, 33, 43 e 53



Sol da Manhã



Praia das Toninhas

 1 vaga de garagem



Bancada de mármore integrada



Sol da Manhã



Varanda gourmet



Armário Náutico



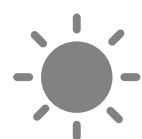
Churrasqueira a carvão



51,70m<sup>2</sup>

1 suíte + 1 banheiro

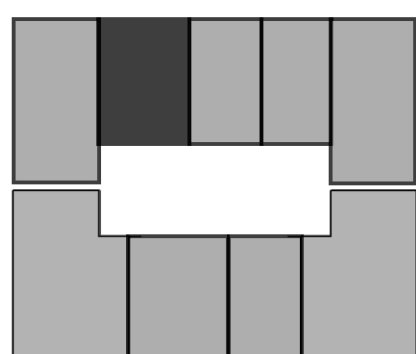
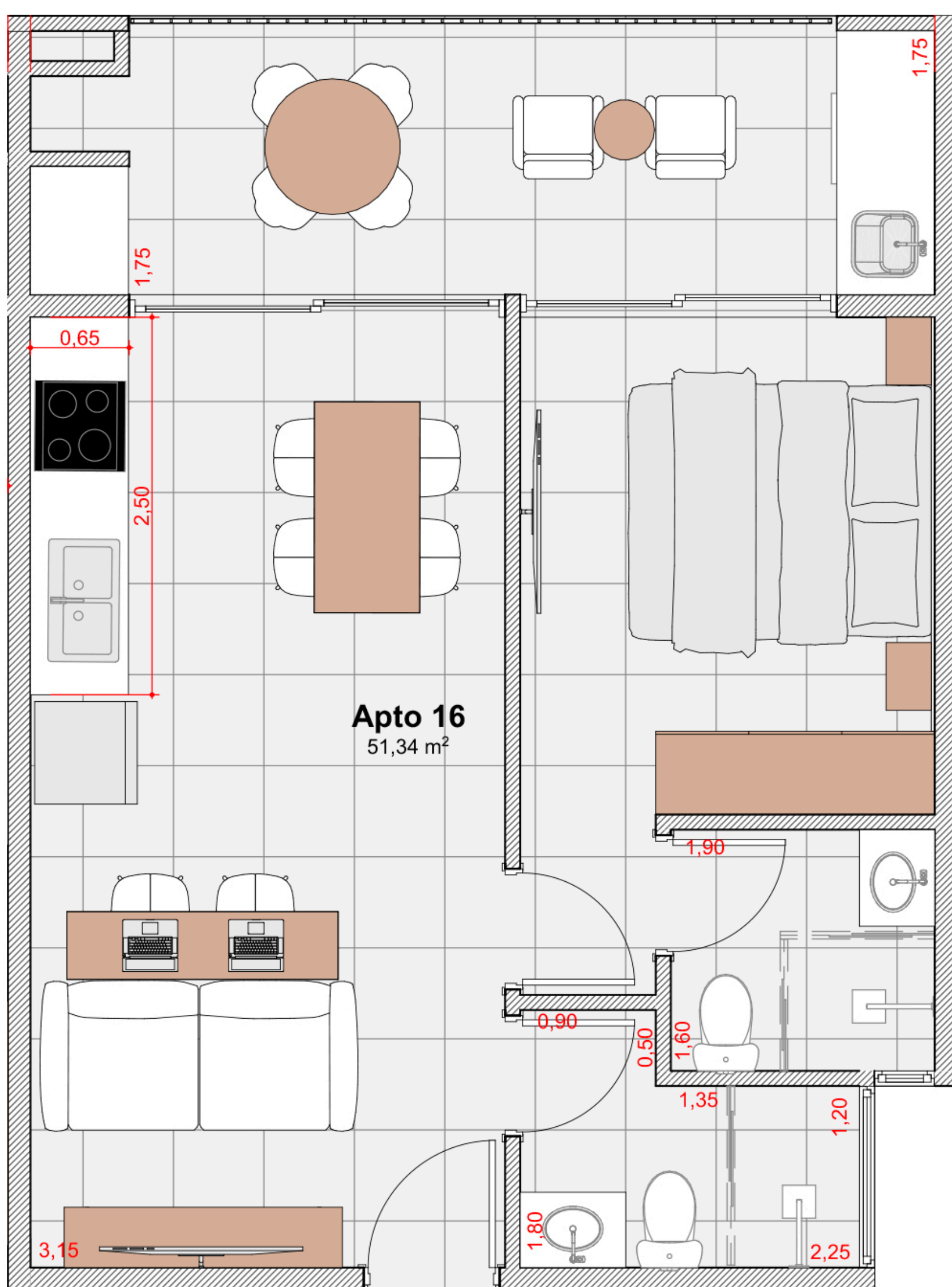
Apartamentos 16, 26, 36 e 46



Sol da Tarde



Serra do Mar



 1 vaga de garagem

 Bancada de mármore integrada

 Sol da Tarde

 Varanda gourmet

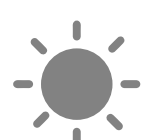
 Armário Náutico

 Churrasqueira a carvão



# 39,90m<sup>2</sup> Studio

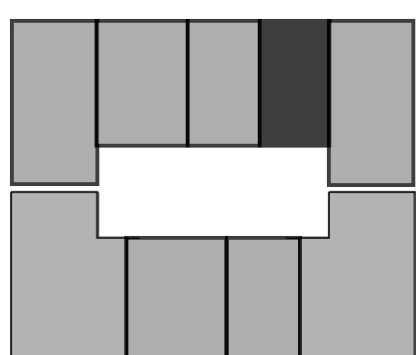
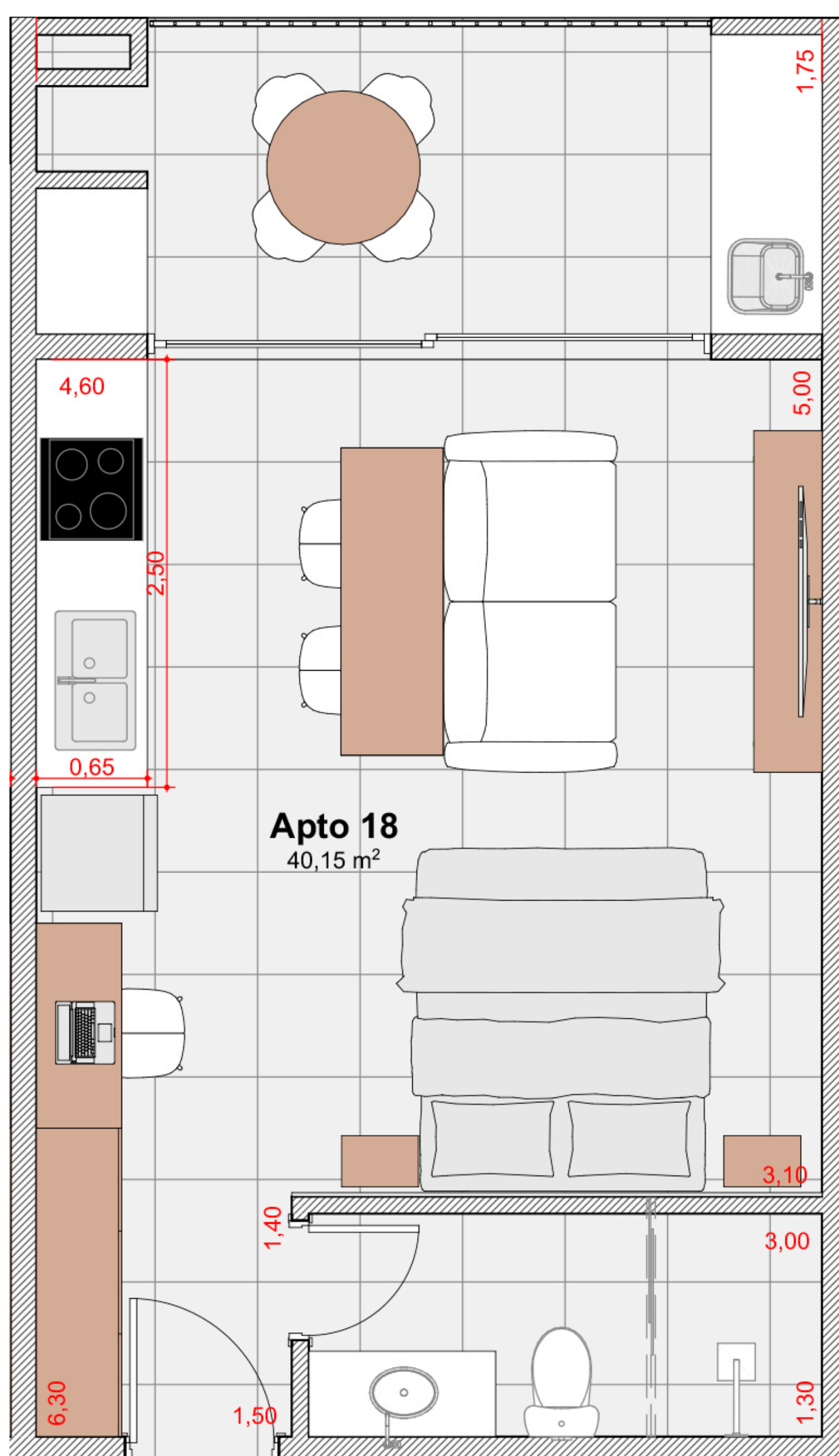
Apartamentos 18, 28, 38 e 48



Sol da Tarde



Serra do Mar



 1 vaga de garagem



Bancada de mármore integrada



Sol da Tarde



Varanda gourmet



Armário Náutico



Churrasqueira a carvão



# 39,90m<sup>2</sup> Studio

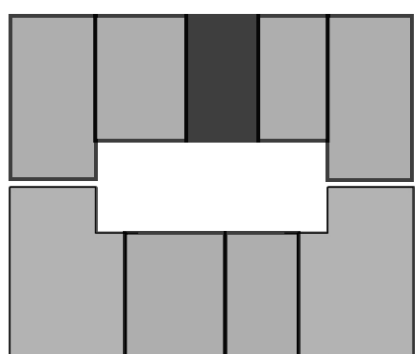
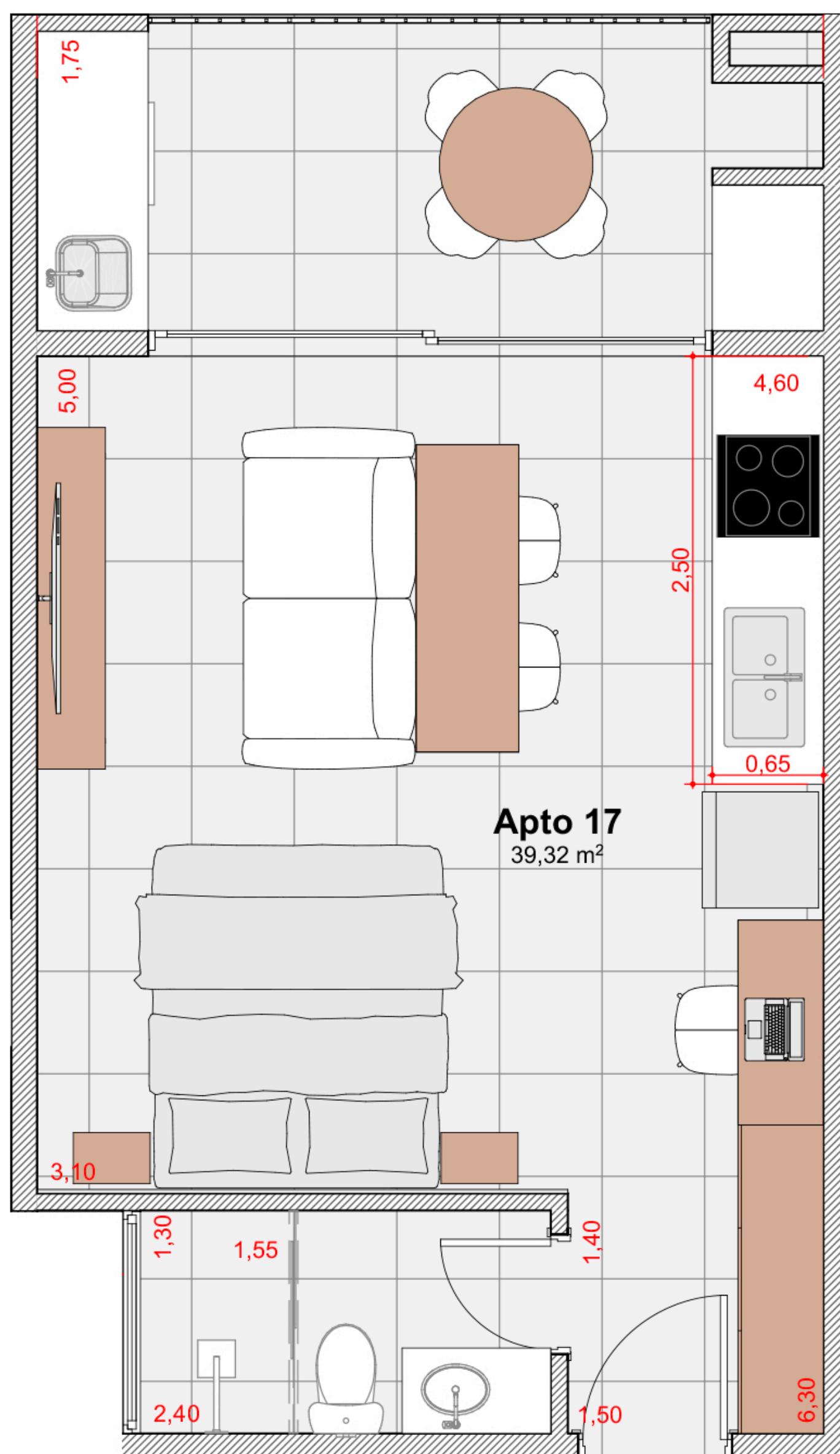
Apartamentos 17, 27, 37 e 47



Sol da Tarde



Serra do Mar



 1 vaga de garagem

 Sol da Tarde

 Armário Náutico

 Bancada de mármore integrada

 Varanda gourmet

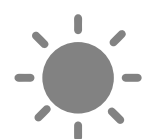
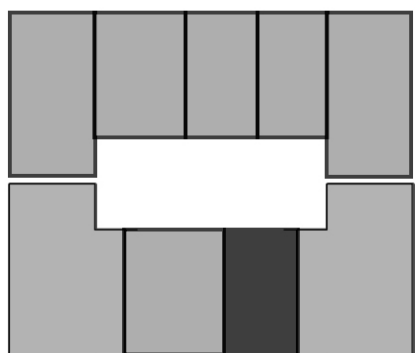
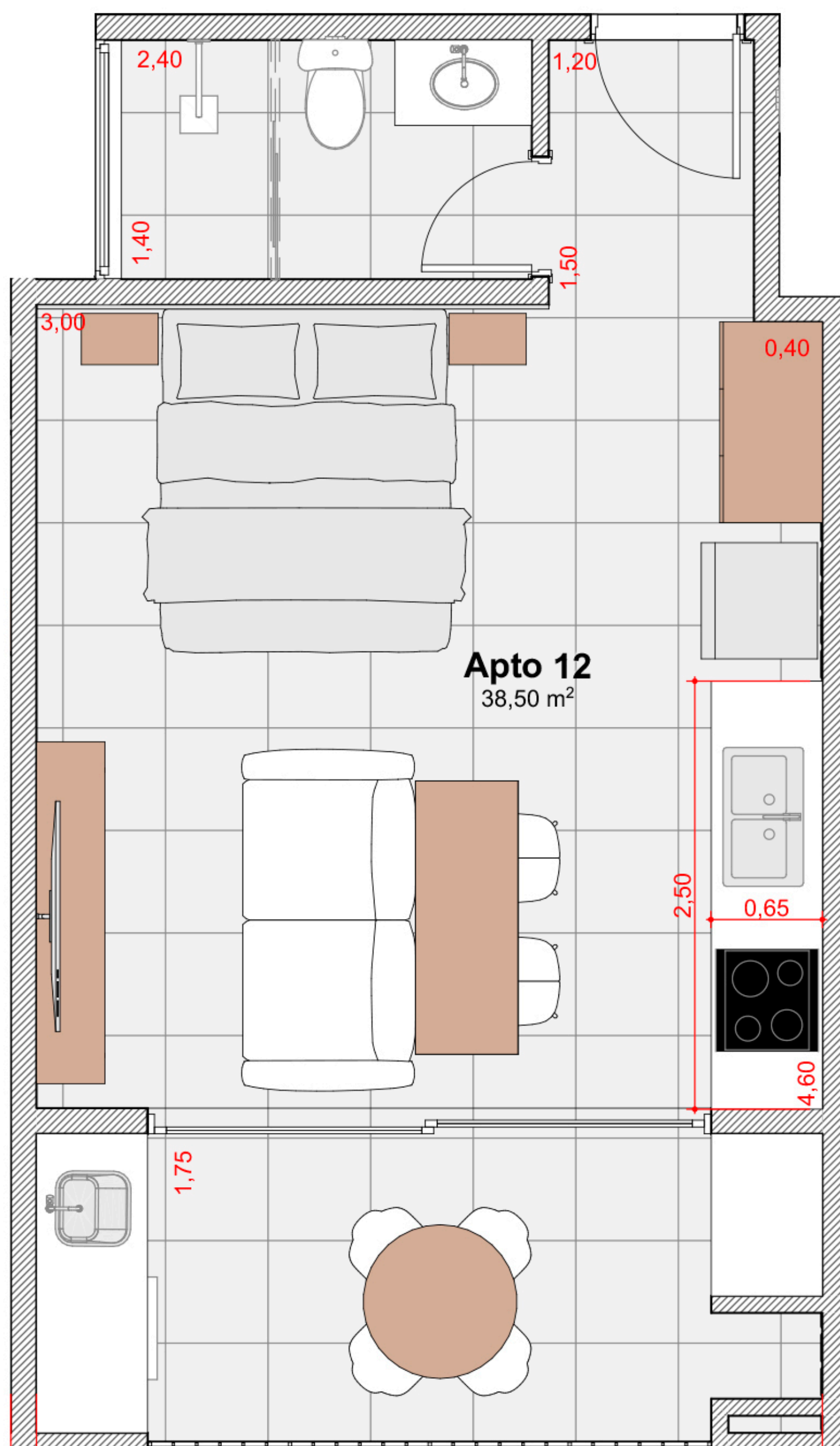
 Churrasqueira a carvão



# 38,00m<sup>2</sup>

## Studio

Apartamentos 12, 22, 32, 42 e 52



Sol da Manhã



Praia das Toninhas

 1 vaga de garagem



Bancada de mármore integrada



Sol da Manhã



Varanda gourmet



Armário Náutico



Churrasqueira a carvão



Área de Lazer  
Completa na Cobertura



Piscina Raia

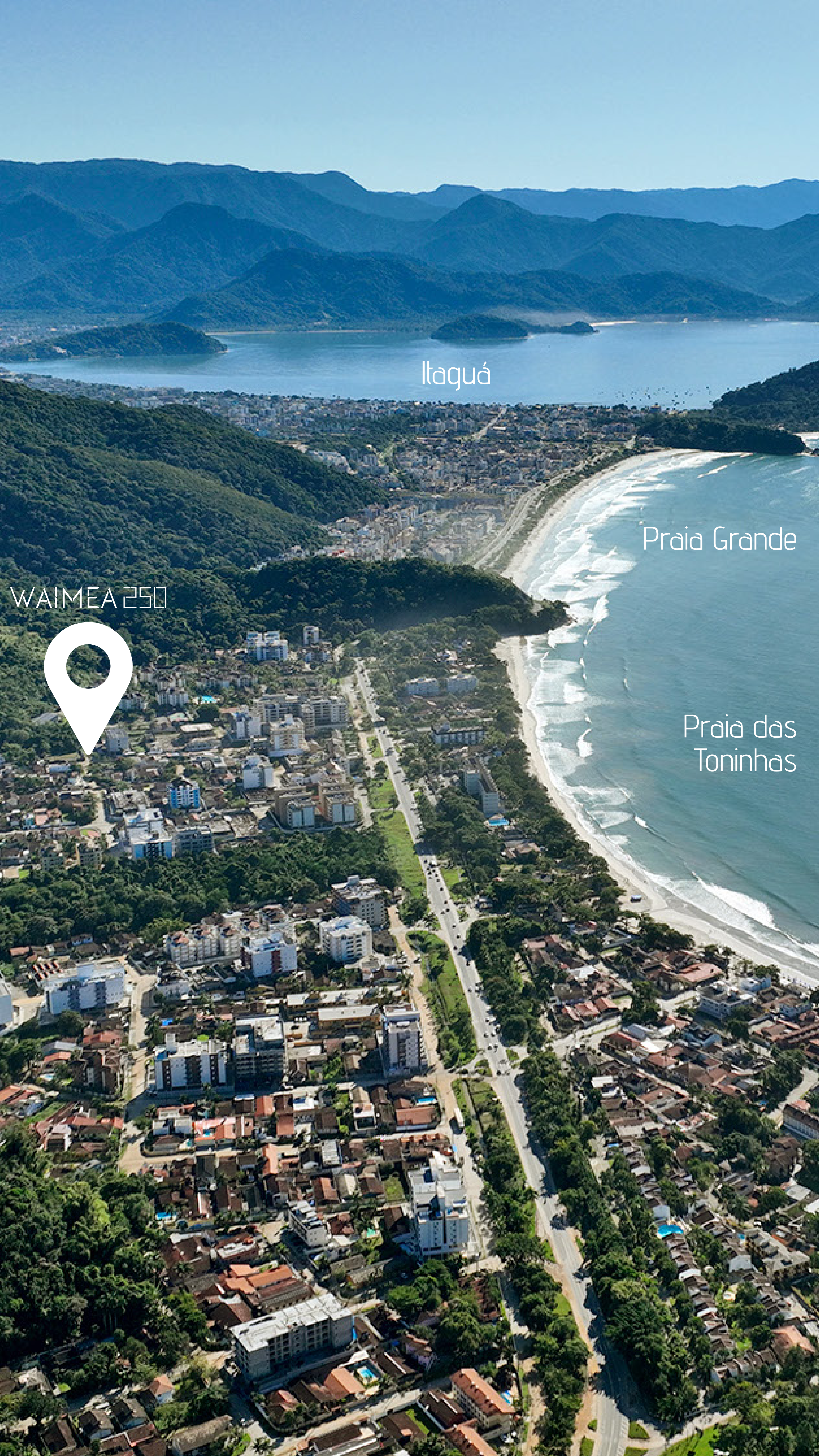


Academia



Sauna integrada com a piscina



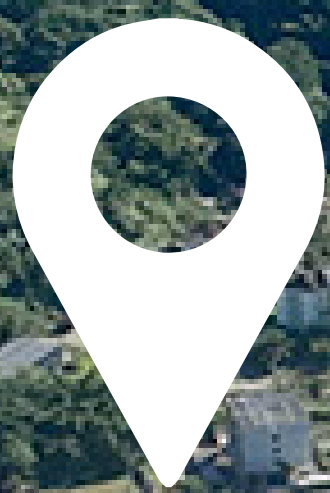


Itaquá

Praia Grande

Praia das  
Toninhas

WAIMEA 250







**DS2**  
EMPREENDIMENTOS